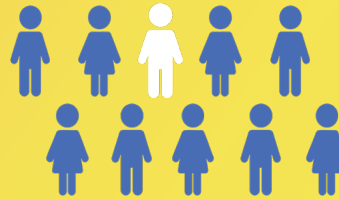


Childhood bereavement is a critical issue and an increasingly important national priority.

The Childhood Bereavement Estimation Model® (CBEM)¹ approximates rates of bereavement for U.S. youth. Results from the CBEM are updated annually using vital statistics² from the Centers for Disease Control and Prevention.* The 2025 report reflects 2019 to 2023 data, the five most recent years available.

1 in 10



Indiana children will experience the death of a **parent or sibling** by age 18

9.9% ~ 156K

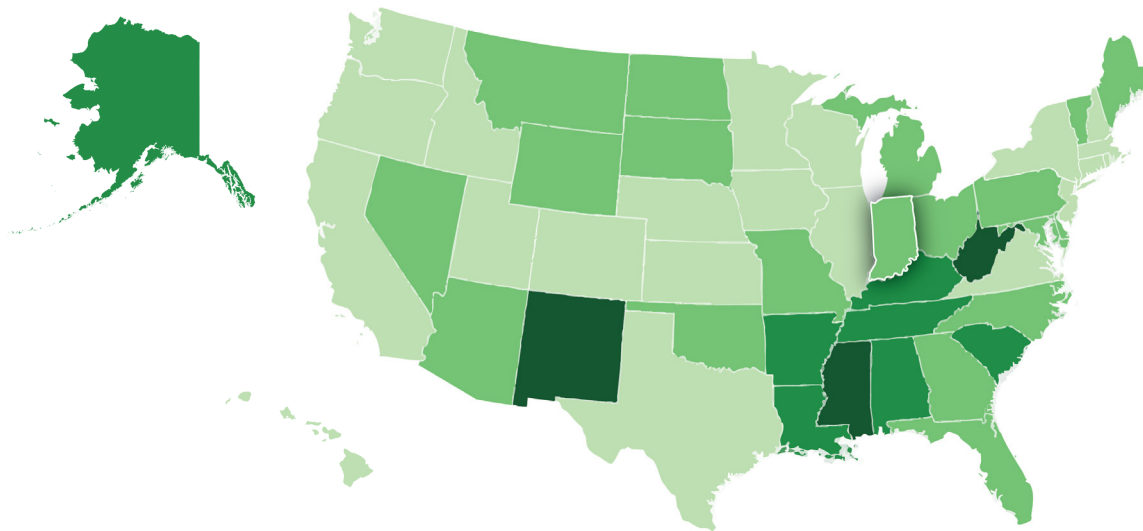
children will be bereaved by age 18
HIGHER than national rate of 8.9%

& MORE THAN DOUBLES

371K

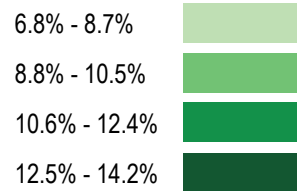
youth will be bereaved by age 25

Childhood Bereavement Rates by State[†]



19TH
 CBEM RANKING BY STATE[†]

KEY



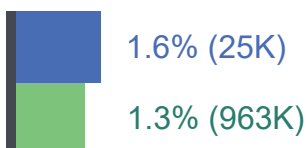
[†]Bereavement due to parent or sibling death by age 18.

Relationship to the Deceased

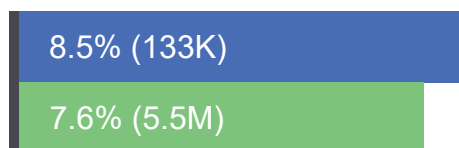
The CBEM provides independent estimates of the percentage and number of youth ages 0-17 who will experience the death of a parent or sibling.



Sibling



Parent



CBEM Leading Cause of Death

The CBEM can produce bereavement estimates by cause of death. The tables below reflect the percentages of all **bereaved** children who will experience bereavement due to the leading causes of death for youth and adults, respectively.

Death of a Sibling (Ages 0 - 17)

Cause of Death	Percentage of Bereaved Children†
Conditions Related to Birth	27.6%
Accidents	17.4%
Birth Defects	15.9%
Homicide	5.7%
Suicide	3.9%

Death of a Parent (Ages 26 - 45)

Cause of Death	Percentage of Bereaved Children†
Accidents	38.7%
Heart Disease	10.2%
Suicide	9.2%
Cancer	8.8%
Homicide	5.6%

†The percentage of bereaved children for a specific cause of death is calculated by dividing the number of children who will experience bereavement due to that cause by the number of all bereaved children.

Cost of Inaction

The death of a parent, sibling, or other important person in a child's life is one of the most frequently reported disruptive childhood experiences³ and without appropriate support, can adversely affect lifelong health and well-being.⁴ The findings below represent research about the impact of bereavement in the U.S. and abroad.



97%
of teachers

believe grief adversely impacts learning.⁵



Bereaved children are
2x MORE LIKELY

to experience significant challenges at home.⁶



1 in 4
youth

who die by suicide were bereaved.⁷



Bereaved youth are
175% MORE LIKELY

to develop Substance Use Disorder in adulthood.⁸

Call to Action

Projected CBEM results can help center childhood bereavement as a public health priority. States have the power to enact change locally. For example, [Utah](#) added a checkbox on death certificates to identify children who lost a caregiver and connect them with resources, while [New Jersey](#) passed legislation mandating grief education for students in grades 8 through 12. Together, we can ensure that comprehensive grief care becomes universally available.

To learn more about nationally available resources, visit judishouse.org/essential-services.



Sources

To access the reference material used in this report, please visit judishouse.org/2025-CBEM-sources.

	<p>Judi's House/JAG Institute is a research-based nonprofit in Aurora, CO devoted to supporting grieving children and their families.</p>		<p>Judi's House/JAG Institute partnered with New York Life Foundation to create the Childhood Bereavement Estimation Model (CBEM).</p>
---	---	--	--

*For more info about the CBEM and additional data and materials, visit judishouse.org/CBEM.